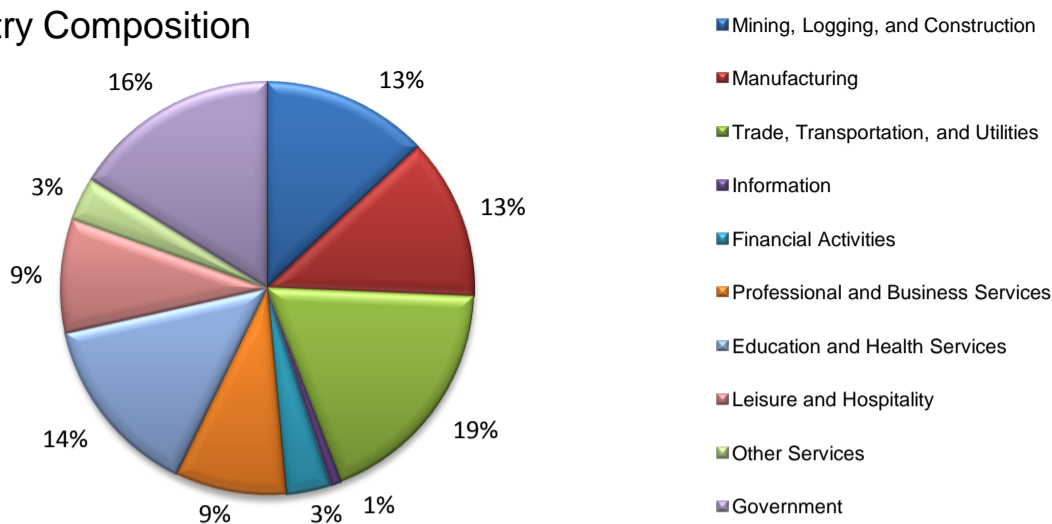
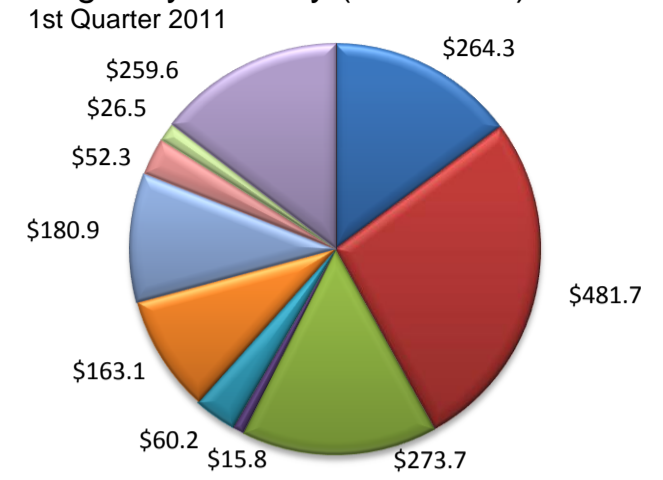


(Hardin, Jefferson, Orange)

Industry Composition



Wages by Industry (in millions)



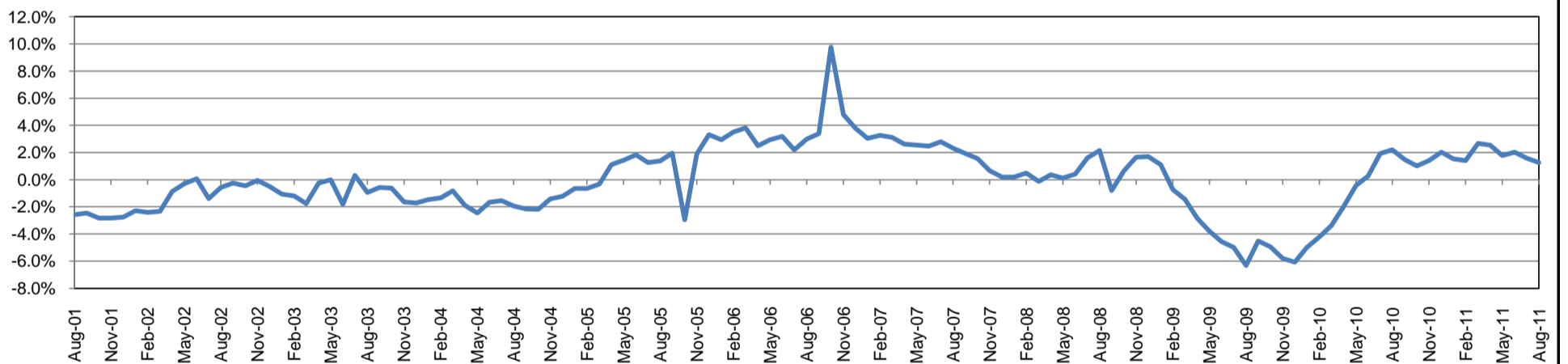
Employment by Industry

	Aug-11	Jul-11	Aug-10	Monthly Change		Annual Change	
				Actual	%	Actual	%
Total Nonfarm	160,900	161,800	158,900	-900	-0.6%	2,000	1.3%
Mining, Logging, and Construction	20,900	20,900	19,200	0	0.0%	1,700	8.9%
Manufacturing	20,400	20,200	19,800	200	1.0%	600	3.0%
Trade, Transportation, and Utilities	29,800	30,300	29,700	-500	-1.7%	100	0.3%
Information	1,400	1,400	1,500	0	0.0%	-100	-6.7%
Financial Activities	5,600	5,700	5,500	-100	-1.8%	100	1.8%
Professional and Business Services	14,000	14,200	14,500	-200	-1.4%	-500	-3.5%
Education and Health Services	23,000	23,200	23,000	-200	-0.9%	0	0.0%
Leisure and Hospitality	14,300	14,600	14,300	-300	-2.1%	0	0.0%
Other Services	5,500	5,600	5,500	-100	-1.8%	0	0.0%
Government	26,000	25,700	25,900	300	1.2%	100	0.4%

Industry Size Class March 2011

Size Class	Employees per firm	Number of Firms	Employment in Size Class	% Total Employment
9	1000+	15	25,947	16.7%
8	500-999	35	24,657	15.9%
7	250-499	47	16,404	10.6%
6	100-249	165	25,303	16.3%
5	50-99	263	17,996	11.6%
4	20-49	605	18,853	12.2%
3	10-19	858	11,657	7.5%
2	5-9	1,220	8,012	5.2%
1	1-4	2,939	6,198	4.0%
0	0	530	0	0.0%
Total		6,677	155,027	100.0%

Annual Growth Rate for Total Nonagricultural Employment



Unemployment Information (all estimates in thousands)

	Beaumont - Port Arthur MSA				Texas (Actual)				United States (Actual)			
	C.L.F.	Emp.	Unemp.	Rate	C.L.F.	Emp.	Unemp.	Rate	C.L.F.	Emp.	Unemp.	Rate
Aug-11	191.1	169.2	21.9	11.5	12,317.2	11,276.2	1,041.0	8.5	154,344.0	140,335.0	14,008.0	9.1
Jul-11	192.2	170.0	22.2	11.5	12,317.8	11,241.3	1,076.5	8.7	154,812.0	140,384.0	14,428.0	9.3
Aug-10	188.5	168.4	20.1	10.7	12,167.0	11,156.5	1,010.5	8.3	154,678.0	139,919.0	14,759.0	9.5

Historical Unemployment Rates

